



MONTHLY MEMBERSHIP PROGRESS REPORT

District 318 C

Results as of: 06/30/2018

GMT: N S SANKAR

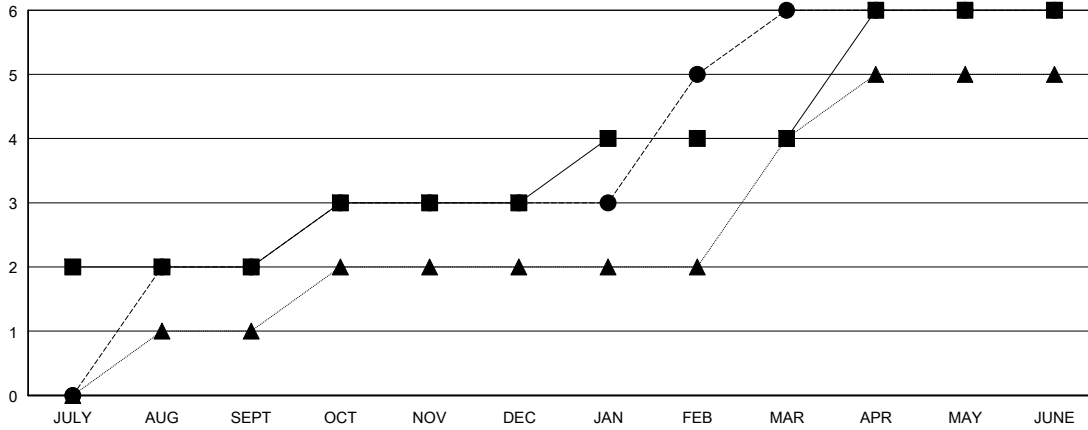
LOCATION INDIA

GMT CA

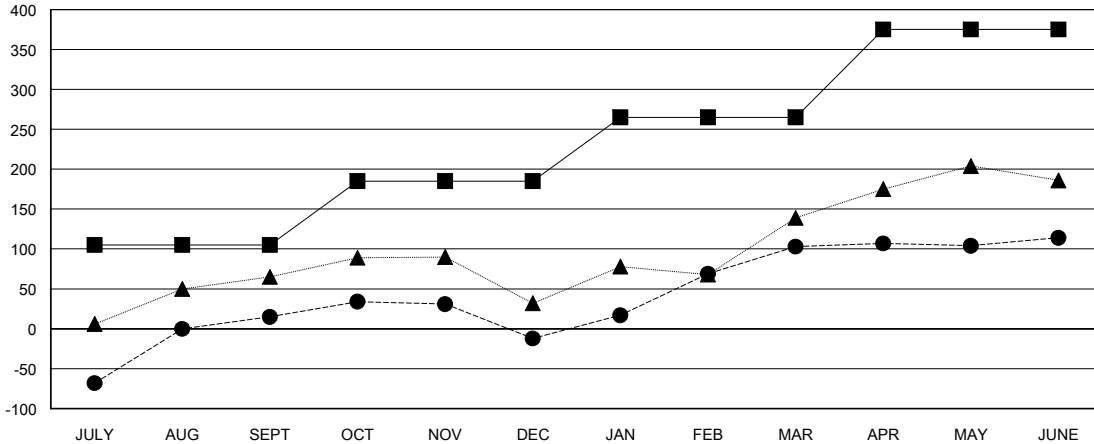
Clubs			
RESULTS FOR 2017-2018			
QUARTER	NEW CLUB GOAL	NEW CLUBS	DROPPED CLUBS
JULY/AUG/SEPT	2	2	1
OCT/NOV/DEC	1	1	1
JAN/FEB/MAR	1	3	0
APR/MAY/JUNE	2	0	3

Members			
RESULTS FOR 2017-2018			
QUARTER	MEMBER GROWTH NET GOAL	MEMBER GROWTH ACTUAL	DROPPED MEMBERS ACTUAL (including transfers)
JULY/AUG/SEPT	105	144	123
OCT/NOV/DEC	80	51	75
JAN/FEB/MAR	80	158	23
APR/MAY/JUNE	110	295	277

GOALS AND ACTUAL NEW CLUBS CUMULATIVE



GOALS AND ACTUAL MEMBERS CUMULATIVE



DROPPED CLUBS: 5	77 CLUBS OF 113 ADDED 1 OR MORE NEW MEMBERS	<u>GENDER DISTRIBUTION</u>		
		MALE	3,406 (89.37%)	
<u>DROPPED MEMBERS</u>		FEMALE	405 (10.63%)	
		Women Percentage Fiscal Year Goal: 5%		
DECEASED	14	TOTAL FAMILY UNIT MEMBERS		0
CLUB CANCELLED	126	FAMILY MEMBERS PAYING HALF DUES		0
OTHER	358			
TOTAL	498			

[CLICK HERE FOR CUMULATIVE MEMBERSHIP DATA](#)